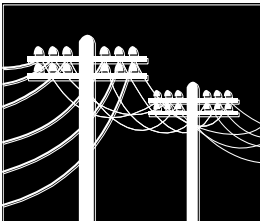


**The criteria you should meet to access the service**

Individuals should:

- ⇒ Be aged 65 and over
- ⇒ Live in the Local Authority Area of Fife
- ⇒ Be living in their own home (this might include sheltered and very sheltered accommodation but does not include Care Homes)
- ⇒ Consent to the involvement of a Local Area Co-ordinator and the service we deliver
- ⇒ Be open to considering all opportunities available within your community which might support community and

independent living and a good quality of life



**Helping you to connect with your community**

# Voice of the elderly

## Local Area Co-ordination Fife...

### ⇒ Local Area Co-ordinators:

#### East Fife -

- ⇒ Wayne Mathieson
- ⇒ Shirley Heeps

#### West Fife -

- ⇒ Alison Wilson
- ⇒ Fiona Clark

**Fife Elderly Forum Executive**  
Office 1-2  
Fraser Buildings  
Millie Street  
Kirkcaldy

**Phone: 01592 643743**

#### E-mail East Fife:

- ⇒ [wayne@fife-elderly.org.uk](mailto:wayne@fife-elderly.org.uk)
- ⇒ [shirley@fife-elderly.org.uk](mailto:shirley@fife-elderly.org.uk)

#### E-mail West Fife:

- ⇒ [alison@fife-elderly.org.uk](mailto:alison@fife-elderly.org.uk)
- ⇒ [fiona@fife-elderly.org.uk](mailto:fiona@fife-elderly.org.uk)

Funded with the support of the Change Fund & Fife Council

Scottish Charity No. SC022596

Voice of the elderly

## LOCAL AREA CO-ORDINATION FIFE FOR OLDER PEOPLE



**TEL 01592 643743**



**'Building bridges within the communities of Fife'**

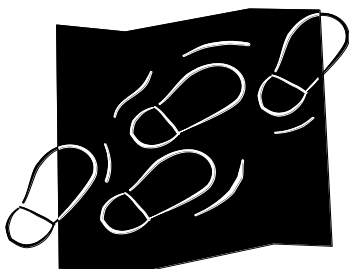
# Local Area Co-ordination

With the support of Change Fund monies the Fife Elderly Forum has partnered with Fife Council to initiate and develop the notion of local area co-ordination with the aim of linking individuals, families and communities with the broad spectrum of services available to older people within Fife.

As a result of findings from the Best Value Review of Day Services for Older People, the post of Local Area Co-ordinator (LAC) was developed. The post of LAC met the recommendations to improve transitional planning and support for day service users and providers. There are four LAC posts supporting people in two geographical areas East & West Fife (equating to two LACs per area).

**EAST FIFE**—incorporates Kinglassie, Glenrothes, Wemyss, Levenmouth, East Neuk, Tay Coast; and the North East including Cupar & St Andrews

**WEST FIFE**—incorporates West Fife including Kincardine, Kelty, Dunfermline & Benarty; and, the Forth Coast to and including Kirkcaldy



**Local area co-ordination, your pathway to services for older people**

## What we do

⇒ We aim to enable older people residing in Fife to live as independently within their homes and communities as far as is possible



**We are only a phone call away**

⇒ We help to identify services and community resources which might be of value to this

⇒ We work with individuals, families, supporters, agencies and community groups to do this

⇒ We only work with people on a consensual basis

## What we don't do

⇒ Carry out formal or statutory assessments for services (including personal care)

⇒ We do not work with individuals who do not reside in Fife

⇒ We do not work with people who are already in a Care Home setting

⇒ We do not provide a direct service such as befriending or crisis intervention

## How we can help

⇒ We can help individuals to identify services and community resources which support an active and fulfilling life

⇒ We can help you to feel more included and engaged in your community

⇒ We can support you to find up to date information to help you make your own decisions

⇒ We can help you access other services supported by the Fife Elderly Forum

## How to access the service

⇒ Depending upon where you live in Fife you should contact the appropriate LAC directly (this can be one of two LACs depending upon whether you live in East or West Fife)

⇒ You should complete a simple referral form yourself (self-referral) or be referred by another party with whom you have contact (i.e. family member, carer or Social Worker) - a referral form can be obtained from the contacts provided

⇒ You should want the service and meet the service criteria

**Phone: 01592 643743**

**E-mail East Fife:**  
[wayne@fife-elderly.org.uk](mailto:wayne@fife-elderly.org.uk)  
[shirley@fife-elderly.org.uk](mailto:shirley@fife-elderly.org.uk)

**E-mail West Fife:**  
[alison@fife-elderly.org.uk](mailto:alison@fife-elderly.org.uk)  
[fiona@fife-elderly.org.uk](mailto:fiona@fife-elderly.org.uk)